

# Connecting a Bluetooth Scanner to your Android Device

Chapter 1: CT 20/30 .....	1
Chapter 2: Motorola Symbol CS3070.....	2
Chapter 3: Socket Mobile 7Ci.....	3
Chapter 4: Opticon 2002/2005 .....	5
Chapter 5: Scanfob 2002/2005 .....	5
Chapter 6: Navigating to Bluetooth Settings.....	6

## Chapter 1: CT 20/30

**Step 1:** Scan the two barcodes below to factory reset your scanner.



Enter Setup



Factory Reset

**Step 2:** Scan the three barcodes below to place the scanner in Android connection mode.



Enter Setup



One-click Android connection Setup



Exit with Save

**Step 3:** Press and hold down the scanner's power button to turn off, and then press and hold the power button down again to turn the scanner on.

**Step 4:** From the Android device, navigate to Bluetooth settings (Page 7). Find the CT20/30 in the device list, and then tap the scanner to connect.

**Step 5:** When you are asked for a PIN code, enter the pin code '10010' before pressing OK.

At this time, the scanner should be properly connected to the Android device itself.

**Step 6:** To disable the scanner sound, scan the three barcodes below.



Enter Setup



Mute



Exit with Save

The CT20/30 user manuals can be found at <https://www.dropbox.com/sh/yxatiyr2amqty9e/AADehhJ29AJfhqwOR8niUJeGa?dl=0>.

## Chapter 2: Motorola Symbol CS3070

**Step 1:** Turn on the scanner by pressing down on the ‘M’ button on the bottom of the scanner, until you see a green light appear at the top. The ‘M’ button’s blue light will flash slowly.

**Step 2:** Scan the barcode below to place the scanner in pairing mode.



**Bluetooth Keyboard Emulation (HID)**

**Step 3:** From the Android device, navigate to Bluetooth settings (Page 7). Find the CS3070 in the device list, and then tap the scanner to connect.

**Step 4:** It will ask you to enter a code. Scan the number barcodes below. After you scan the number code, scan the ‘Enter’ barcode to finish.



The CS3070 user manual and quickstart guide can be found here:

[https://www.dropbox.com/sh/e07lr9dwdfx3o5h/AACvsNXSq7Z\\_Xal54PzNIVB4a?dl=0](https://www.dropbox.com/sh/e07lr9dwdfx3o5h/AACvsNXSq7Z_Xal54PzNIVB4a?dl=0).

### Chapter 3: Socket Mobile 7Ci

**Step 1:** Turn on the scanner by pressing and holding down the small power button (below the big oval trigger button) until you hear a beep. You will then see the blue status light blinking on the top.

**Step 2:** Press and hold down both the trigger (big oval button), and the power buttons at the same time, until you hear three descending beeps, and the scanner shuts off. This clears existing pairing information.

**Step 3:** Turn on the scanner, and scan the ‘factory reset’ barcode below. The scanner will beep several times and turn off.



**Step 4:** Turn the scanner on to scan the barcode below to put the scanner into 'HID-Keyboard' mode.



**Step 5:** To disable scanner sound, scan the barcode below.



**Step 6:** To disable scanner vibration, scan the barcode below.



**Step 7:** From the Android device, navigate to Bluetooth settings (Page 7). Find the Socket 7Ci in the device list, and tap that entry to connect.

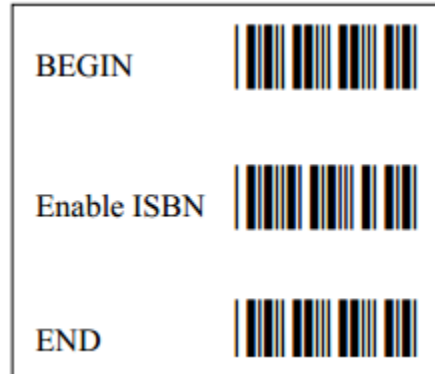
If you have any trouble scanning the barcodes above, all listed barcodes are found in the Command Barcodes document from Socket Mobile here:

<http://www.socketmobile.com/pdf/data-collection/command-barcodes-sheet-7C.pdf>.

The 7Ci's user manual can be found at [http://www.socketmobile.com/pdf/data-collection/chs-1D-imager\\_manual.pdf](http://www.socketmobile.com/pdf/data-collection/chs-1D-imager_manual.pdf).

## Chapter 4: Opticon 2002/2005

**Step 1:** Scan the three barcodes listed below. This will allow the scanner to scan ISBN barcodes.



**Step 2:** Download and print the second page of Opticon's connection instructions, at <http://ftp.opticonusa.com/OPN2002/Documents/OPN2002%20Bluetooth%20QSG%20Insert.pdf>. You will only need to use the second page, entitled 'OPN2002 – Quickstart Guide for HID'.

## Chapter 5: Scanfob 2002/2005

**Step 1:** Follow Step 1 in Chapter 4 to Enable ISBN.

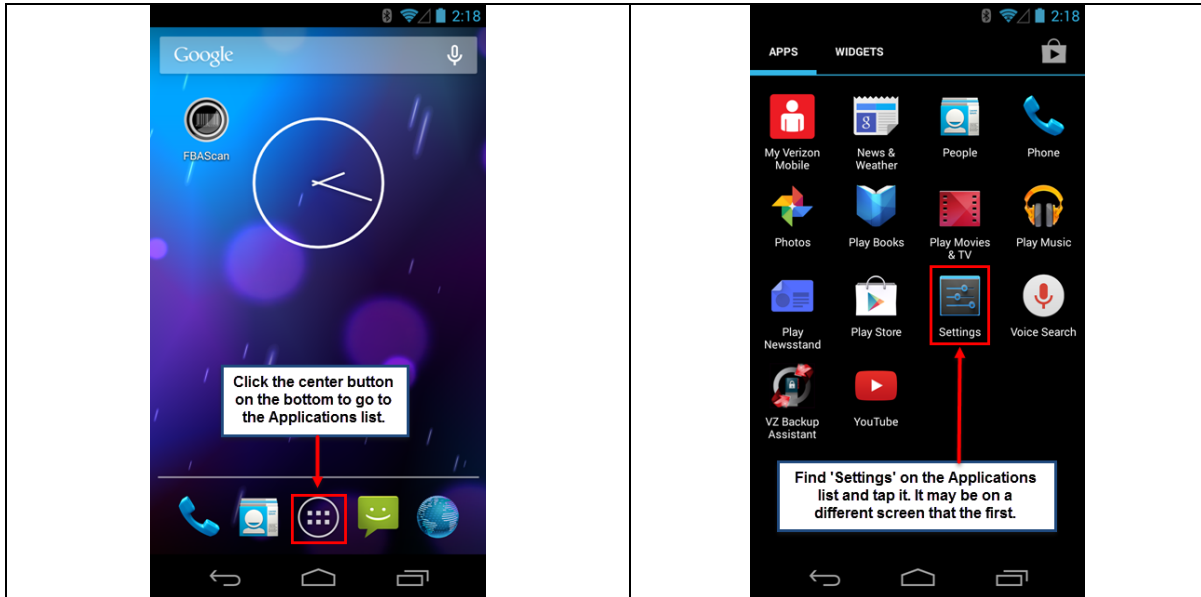
**Step 2:** To set up your Scanfob 2002 with the Android device, go to <https://serialio.com/sites/default/files/pdf/Scanfob-2002-BT-Setup-SPP-HID.pdf>.

To set up your Scanfob 2005 with the Android device, go to <https://serialio.com/sites/default/files/pdf/Scanfob-2005-BT-Setup-SPP-HID.pdf>.

Further clarification can be found on Serialio's website: [https://serialio.com/support/knowledgebase/barcode-scanners/scanfob\\_2005-2002/article\\_03](https://serialio.com/support/knowledgebase/barcode-scanners/scanfob_2005-2002/article_03)

## Chapter 6: Navigating to Bluetooth Settings

**NOTE:** There are a number of different versions of the Android OS on the market, some of which may have a different method of getting to Bluetooth settings. The following is for the 'stock' version of Android 4.3 on a Samsung Galaxy Nexus, a phone we regularly sell.



**NOTE:** Some Android devices may have 'Settings' on the Home screen, or have it accessible through a 'Menu' button on the bottom of the device itself.

